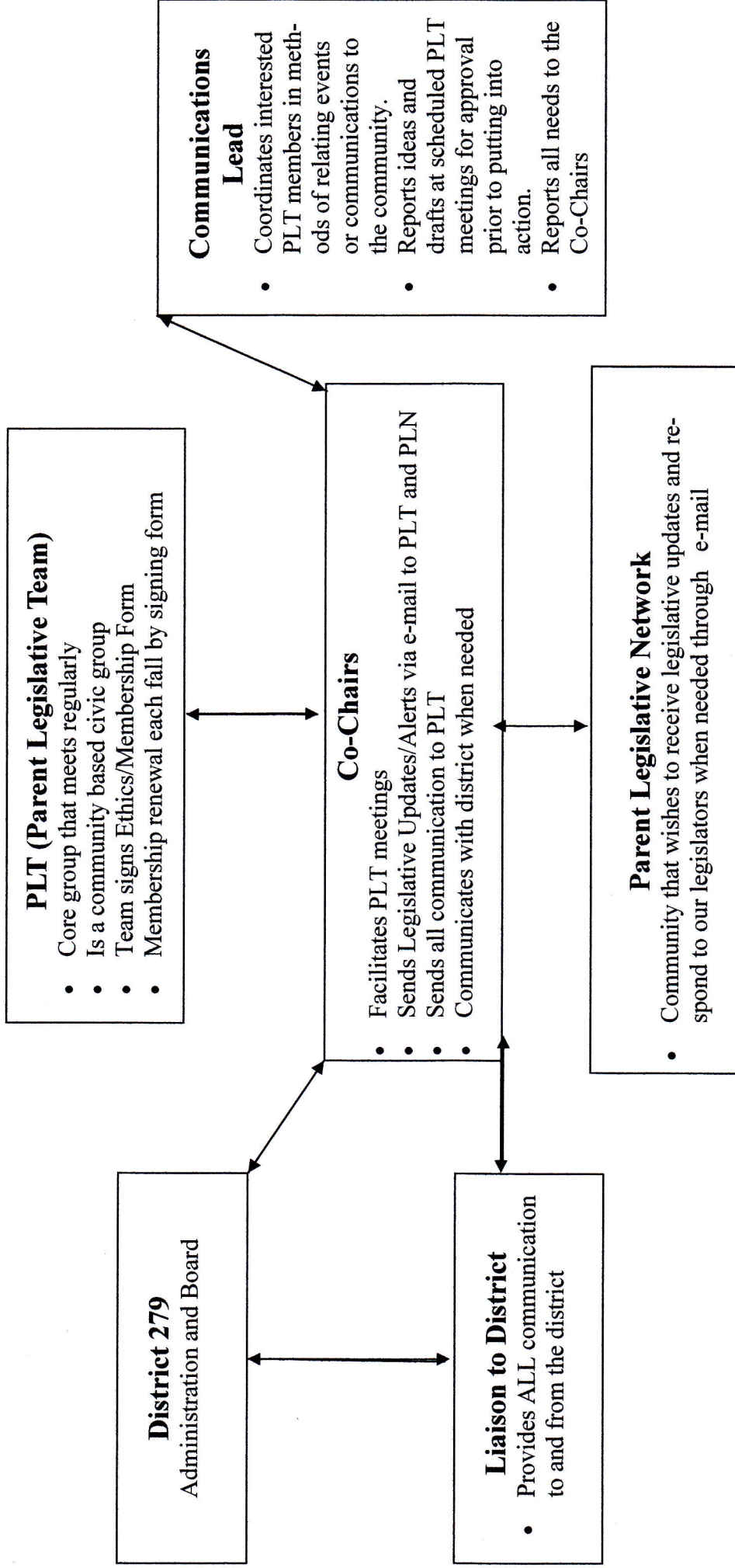


District 279 Parent Legislative Team and Network



PLT Communication Structure

1. Co-chairs send all e-mails to the PLT which will consist of Legislative Updates or general information.
2. Communications Lead or other committee lead positions send questions to co-chairs when in between PLT meeting times.
3. Liaison communicates questions co-chairs receive from PLT to the District and responds back as needed.
4. PLN communicates to legislators when needed. PLN will be provided co-chair contact information for questions they may have.

* Flow of arrow indicates flow of communication