



Laura Kalambokidis

Schools for Equity in Education

April 24, 2015

Minneapolis, MN

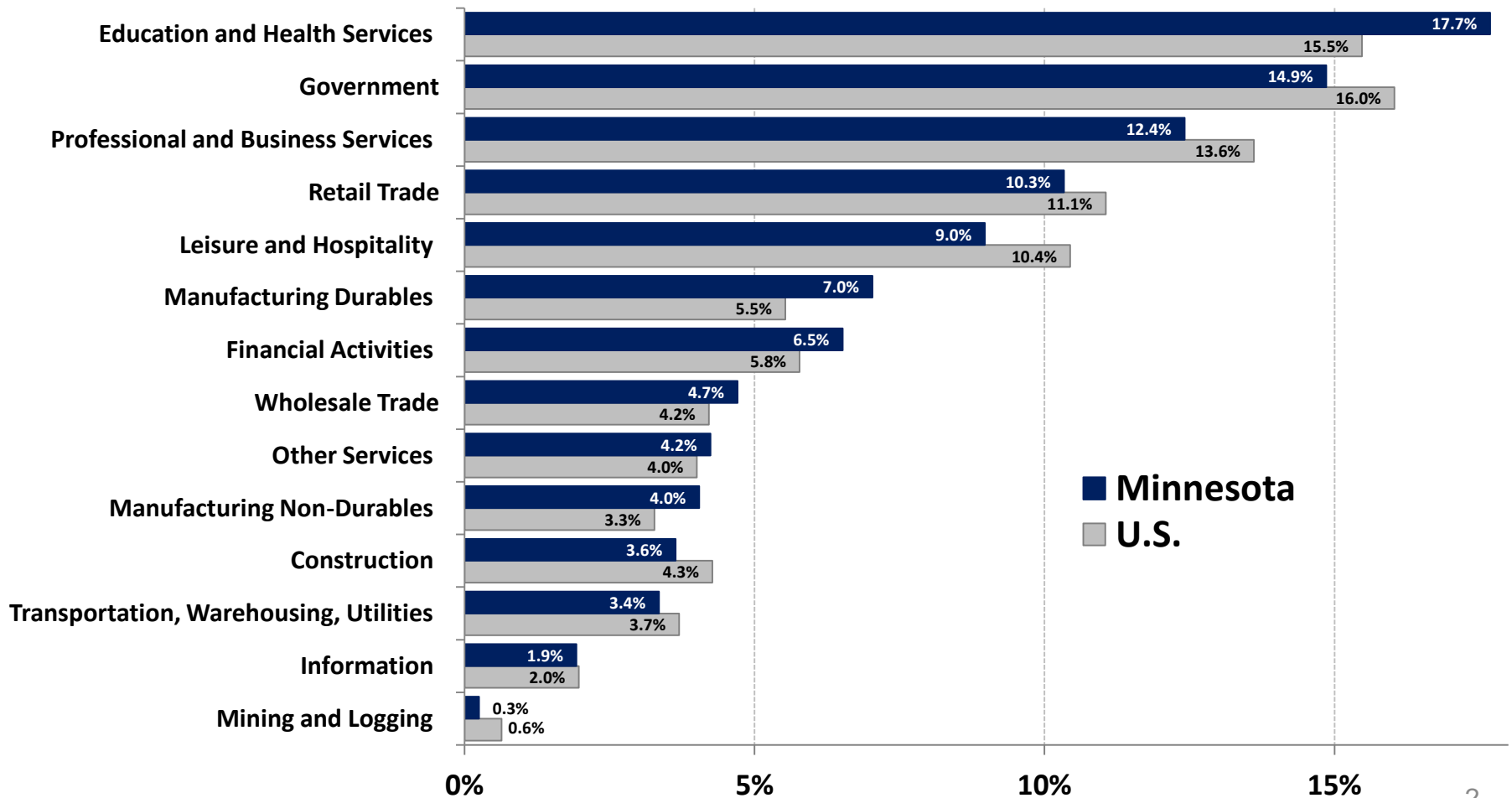
Preparing for Minnesota's Changing Economy

MINNESOTA MANAGEMENT & BUDGET
MMB.STATE.MN.US

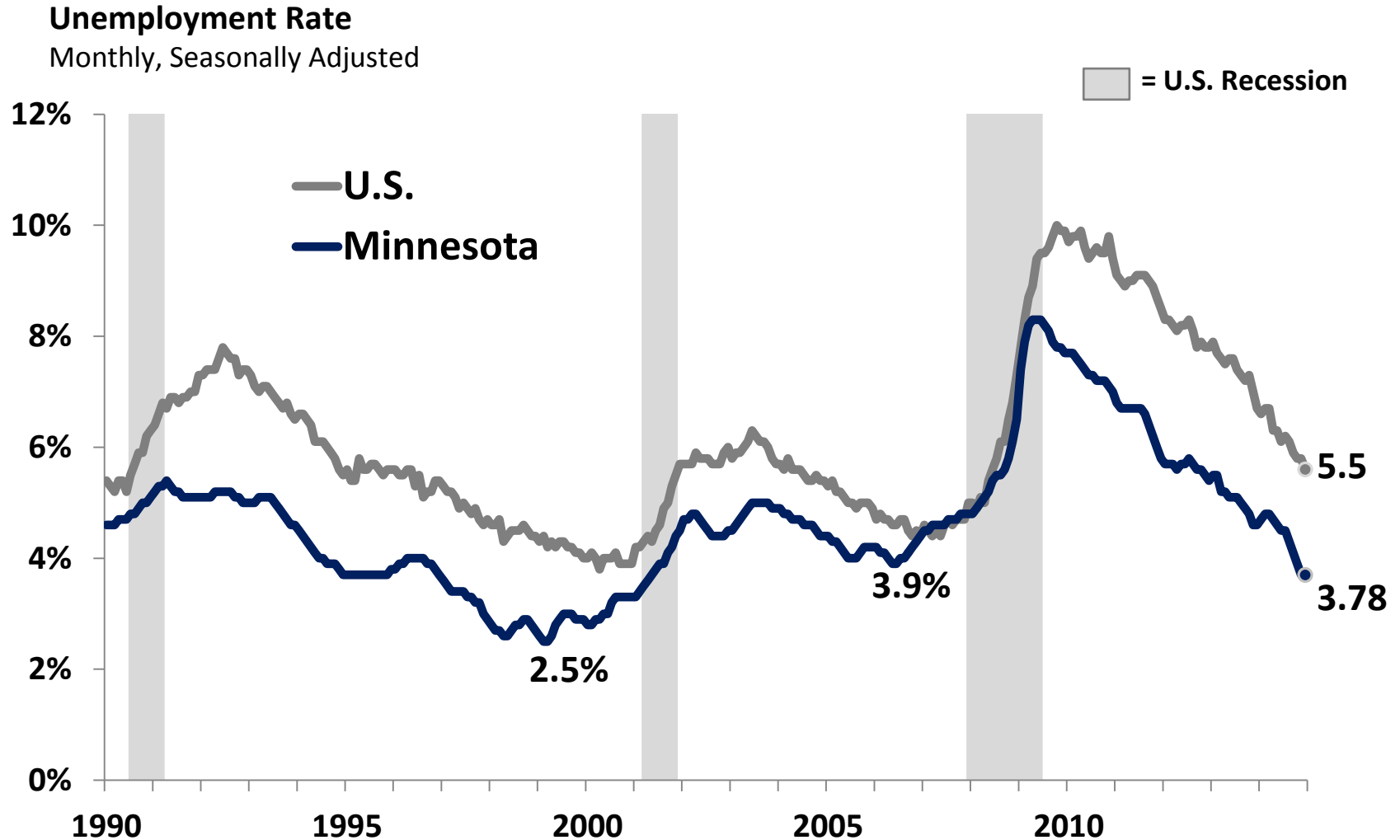


Minnesota's diverse industry profile mirrors U.S.

Percent of Total Non-Farm Employment by Sector (2013)



Minnesota's economic expansion continues

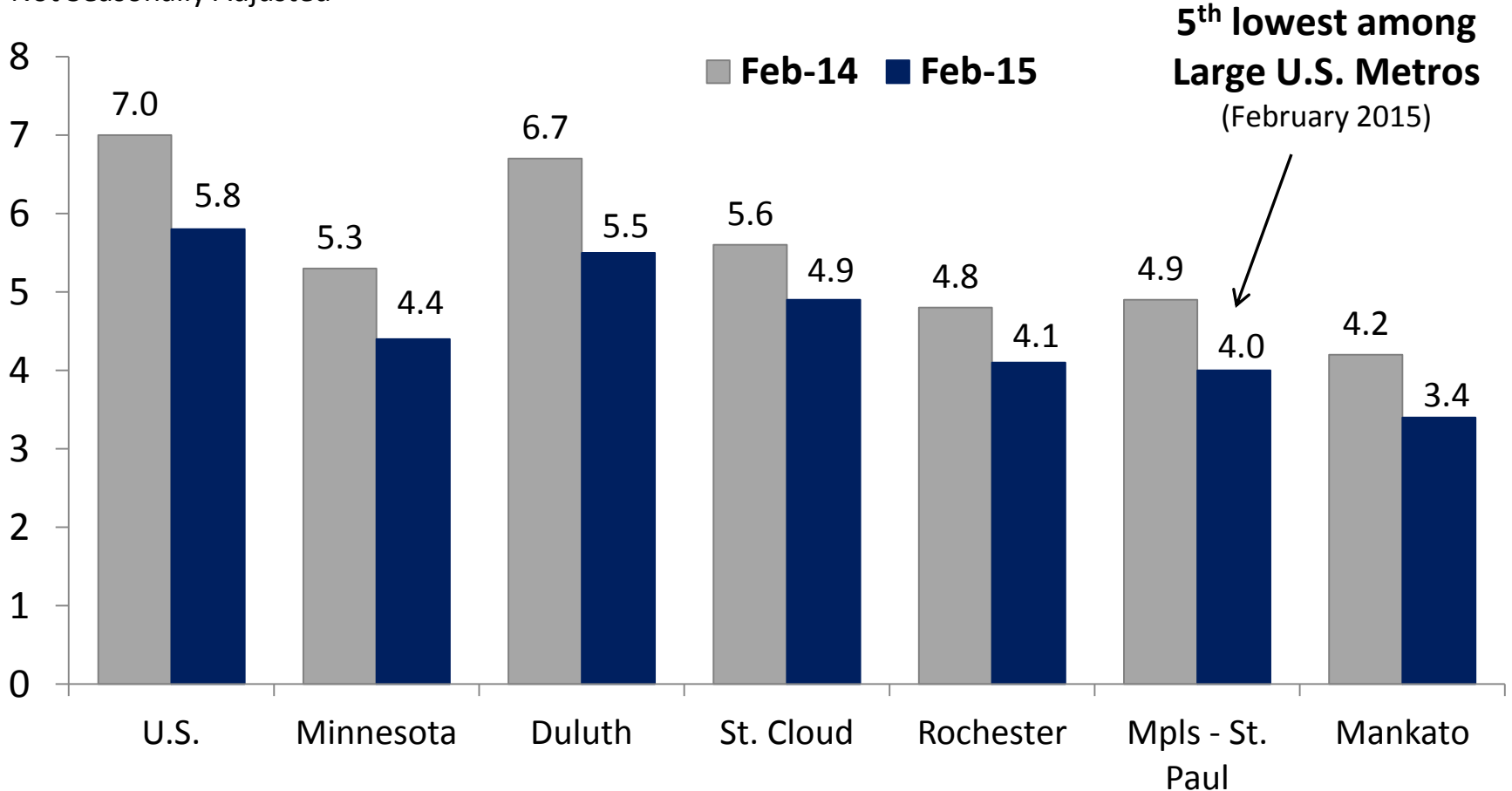


Source: Minnesota Department of Employment and Economic Development (DEED)

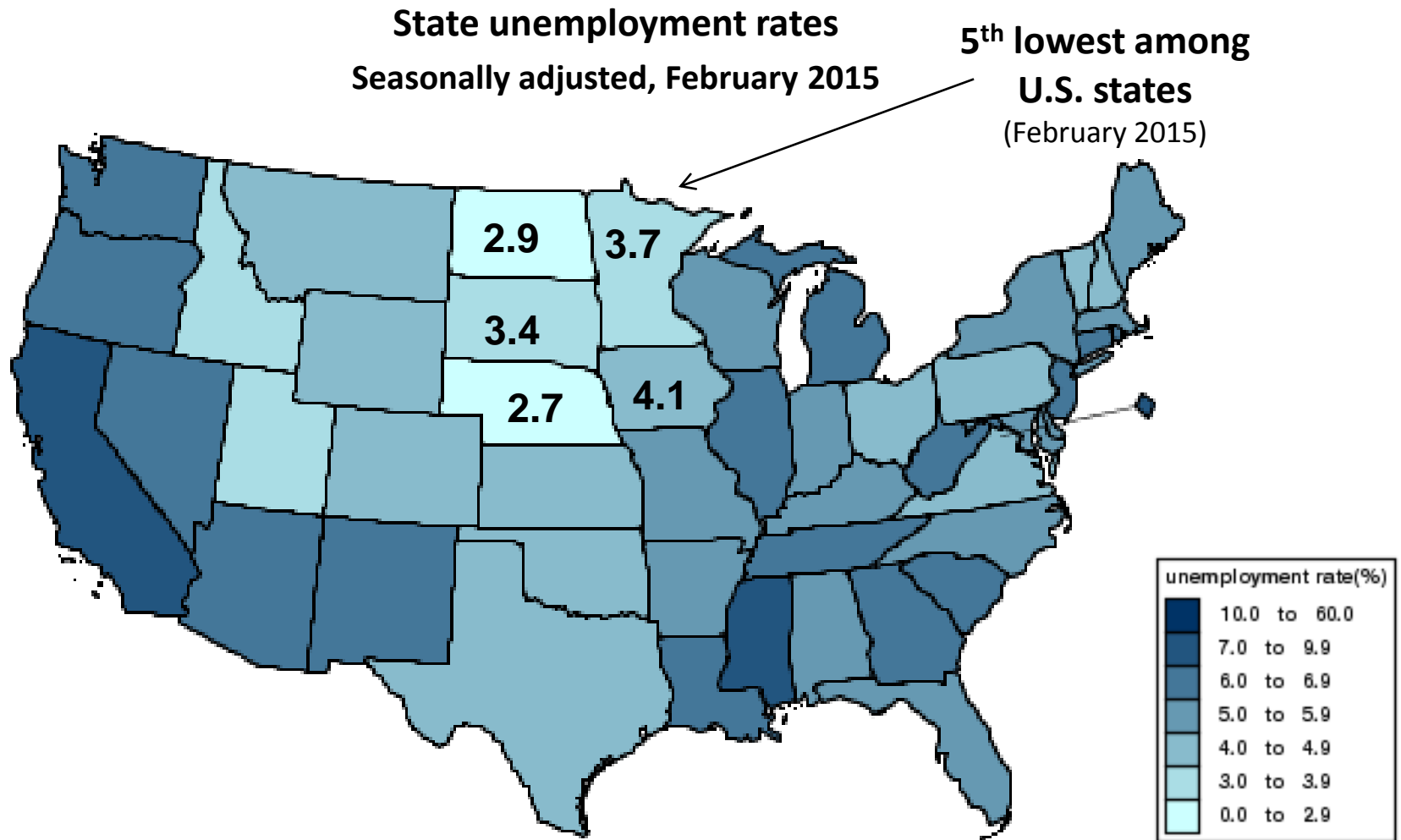
Regional center unemployment rates falling

Unemployment Rate by Metropolitan Statistical Area

Not Seasonally Adjusted



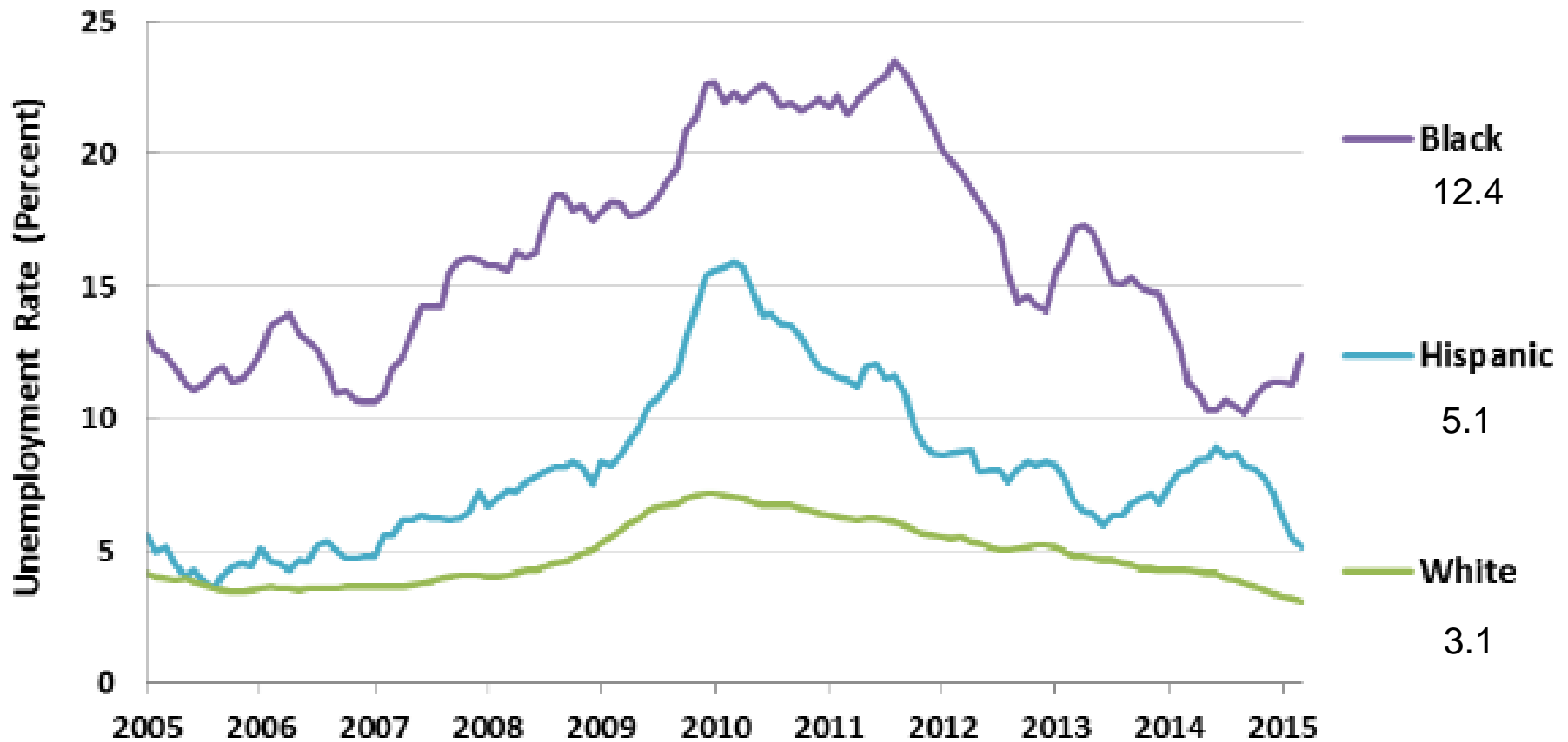
Minnesota's low unemployment neighborhood



Source: U.S. Bureau of Labor Statistics

Some groups still face high unemployment

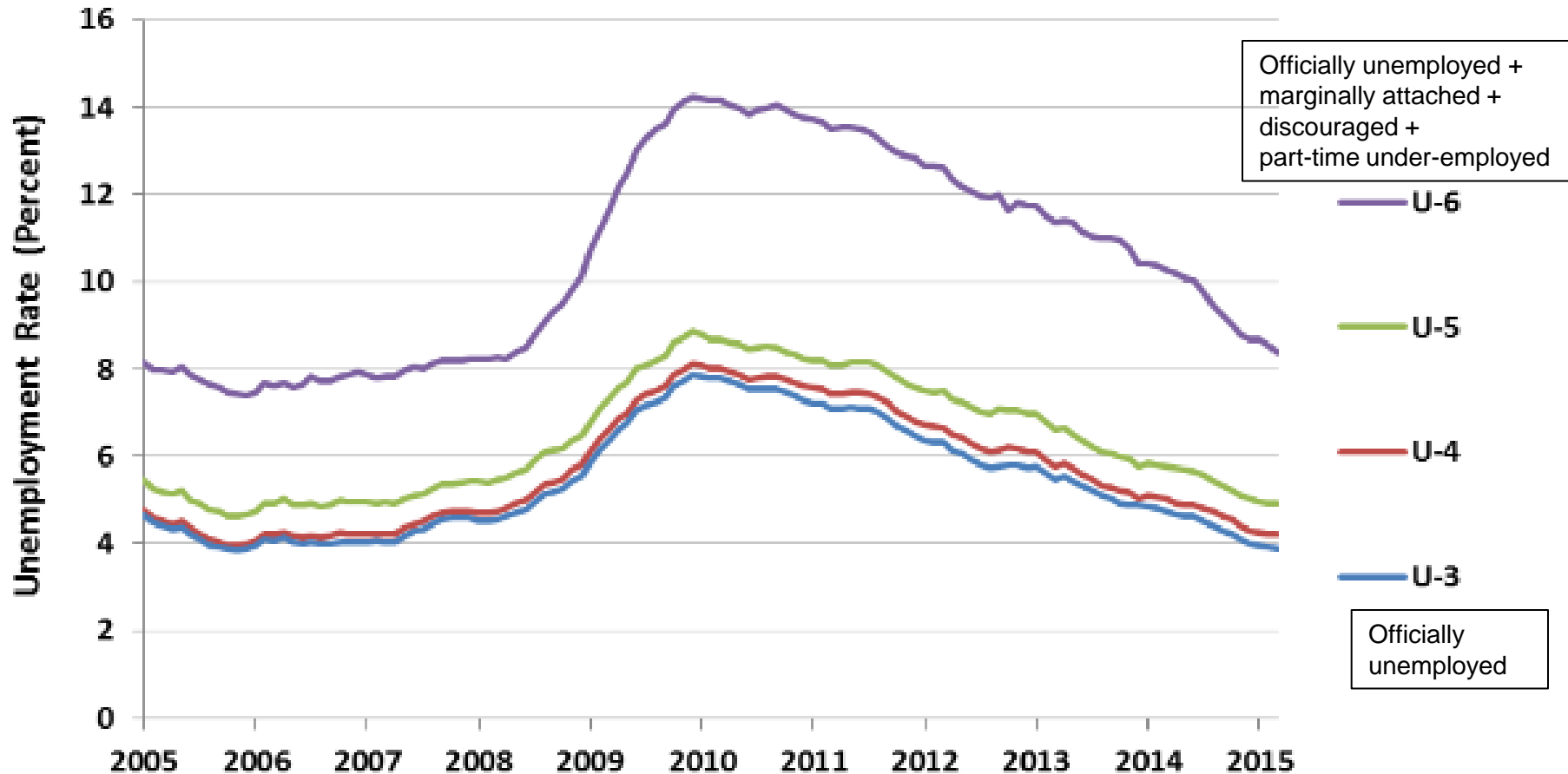
Minnesota Unemployment by Selected Race or Ethnicity



Source: Minnesota DEED, Labor Market Information, Current Population Survey

Many part-time workers want full time work

Minnesota Unemployment and Underemployment



Source: Minnesota DEED, Labor Market Information, Current Population Survey

Leadership choices will affect future economic performance

- **Productivity** matters
 - Worker health
 - Education
 - Research, innovation
 - Infrastructure
- Leave no **worker** behind
- Leave no **entrepreneur** behind